

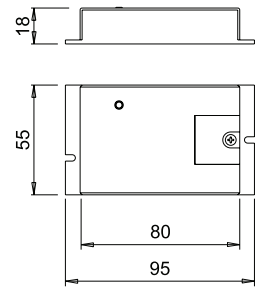


**POLY ECB**  
control module

Input	12-24Vdc
Output	12-24Vdc
Power	36-72W
Wiring IN	200mm Micro24 male*
Wiring OUT	200mm Micro24 female*

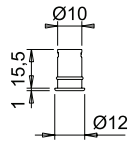
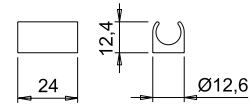


\* Request the adaptor cable set for Micro12 connections



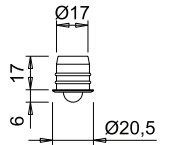
**IR-1**  
back-door proximity sensor or dimmable touchless switch

Wiring	2000mm
--------	--------



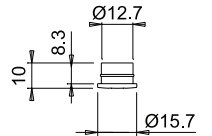
**PIR-1**  
PIR motion sensor

Wiring	2000mm
--------	--------



**PIR-2**  
PIR motion sensor

Wiring	2000mm
--------	--------



# POLY



## electronic multiple sensor control system for single-colour luminaires

POLY is a multiple-sensor control system consisting of an electronic unit and infrared or pyrolytic sensors (max. 3). The control module, wired with a cable for connection to a 24V DC power supply, is provided with a distributor integrating 10 Micro24 connectors and a set-up change button. POLY ECB has three slots for accommodating IR-1 sensors with end-stroke or ON-OFF and dimmer function, and PIR-1 or PIR-2 motion detection sensors. The control module is supplied with a default set-up for using back-of-door IR-1 (proximity) sensors.

